



StoSignature™ Impression: Concrete 10 Concrete 20 Concrete 30

Application Guide

Facades



A variety of concrete surface textures can be achieved with StoSignature™ Impression Concrete. Smooth, textured and even formed concrete surface impressions are just some of the customizable finish surfaces made possible with StoSignature.



Impression: Concrete 10

Fine textured finish with a grooved concrete appearance.



Skill Level 3



Surface Description

Description	• Stolit® Milano is applied to Stolit® 1.0 in a thin layer creating a grooved texture. The lightly grooved surface is sanded after drying. Then characteristic formwork marks can be added.
Product	• Stolit® 1.0 with Stolit® Milano
Supplementary Products	• Sto Clear Coat Sealer (optional)
Possible Color Shades	• StoColor® System; LRV ≥ 20 for StoTherm® ci systems with EPS or XPS insulation The minimum permissible light reflectance value depends on the substrate, the system, and the product.



Stainless Steel Trowel



Plastic Float

Please note that the details, illustrations, general technical information, and drawings contained in this brochure are only general proposals and details which merely describe the basic functions schematically. They are not dimensionally accurate. Applicator/customer is independently responsible for determining the suitability and completeness for the product in question. Adjacent works are described only schematically. All specifications and information must be adjusted or agreed in the light of local conditions and do not constitute work, detail or installation plans. The technical specifications and product information in the Technical Data Sheets and in system descriptions/approvals must be observed.



Application Steps

Impression: Concrete 10

Fine textured finish with a grooved concrete appearance.



1 Using a stainless steel trowel, apply Stolit 1.0 and trowel off to aggregate size. Only apply finish to the area that will be textured immediately.



5 To create the texture hold the trowel at a steeper angle. Trowel in a crisscross pattern to produce a finely rippled texture. Leave the surface to dry.



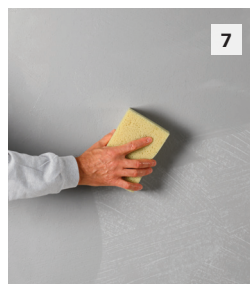
2 Float the freshly troweled finish in figure eight movements using a plastic float. Always remove any excess finish paste from the plastic trowel. Leave the surface to dry.



6 Once completely dry, sand the surface within the next day using a power or manual sander with a dry abrasive paper of P80 - P120 grit until the desired surface texture has been achieved.



3 Knock the tips off the dried finish using the edge of the stainless steel trowel. Blow/brush all loose particles from surface.



7 Wash the finished facade with clear water or carefully dust off dry.



4 Using a stainless steel trowel, apply a thin coat of Stolit Milano as a second layer to the dry Stolit 1.0. Only apply finish to the area that will be textured immediately.



8 Optional: Add formwork marks to the finished surface. Scratch the dry finish with a sharp-edged tool along a guide rail. Optional: apply Sto Clear Coat Sealer for desired gloss.

Notes

The color shade used here is SCS AC 16282.

Stolit Milano is not an abrasion or mar resistant finish nor is it available in dark colors. For added mar resistance top coat with two light coats of Sto Clear Coat Sealer, available in matte or gloss. For dark colors top coat Stolit Milano with StoColor® Acryl Plus in the desired color.



Impression: Concrete 20

Fine textured finish with a floated concrete appearance.



Skill Level 3

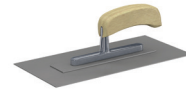


Surface Description

Description	• Stolit Milano is applied to Stolit® 1.0 in a thin layer and float-finished. The non-directional texture is sanded after drying. Then characteristic formwork marks can be added.
Product	• Stolit 1.0 with Stolit Milano
Supplementary Products	• Sto Clear Coat Sealer (optional)
Possible Color Shades	• StoColor® System; LRV ≥ 20 for StoTherm® ci systems with EPS or XPS insulation The minimum permissible light reflectance value depends on the substrate, the system, and the product and can deviate for specific countries.



Stainless Steel Trowel



Plastic Float



Sto-Rubber Sponge Float

Please note that the details, illustrations, general technical information, and drawings contained in this brochure are only general proposals and details which merely describe the basic functions schematically. They are not dimensionally accurate. Applicator/customer is independently responsible for determining the suitability and completeness for the product in question. Adjacent works are described only schematically. All specifications and information must be adjusted or agreed in the light of local conditions and do not constitute work, detail or installation plans. The technical specifications and product information in the Technical Data Sheets and in system descriptions/approvals must be observed.



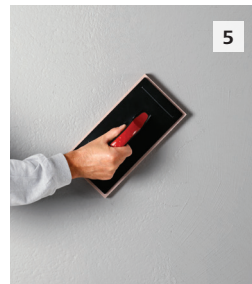
Application Steps

Impression: Concrete 20

Fine textured finish with a floated concrete appearance.



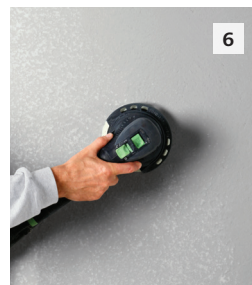
1 Using a stainless steel trowel, apply Stolit 1.0 and trowel off to aggregate size. Only apply finish to the area that will be textured immediately.



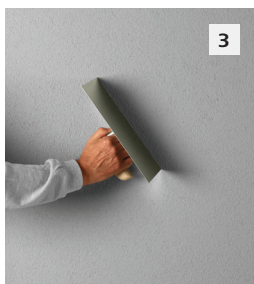
5 When the surface of the Stolit Milano starts to dry, float the entire surface with a slightly damp Sto-Rubber Sponge Float in a non directional manner. Leave the surface to dry.



2 Float the freshly trowelled finish in figure eight movements using a plastic float. Always remove any excess finish paste from the plastic trowel. Leave the surface to dry.



6 Once completely dry, sand the surface within the next day using a power or manual sander with a dry abrasive paper of P80 - P120 grit until the desired surface texture has been achieved.



3 Knock the tips off the dried finish using the edge of the stainless steel trowel. Blow/brush all loose particles from surface.



7 Wash the finished facade with clear water or carefully dust off dry.



4 Using the stainless steel trowel, apply a thin, layer of Stolit Milano to the dry Stolit 1.0 with a steeper angle to produce a fine rippled texture. Let the finish start to dry.



8 Optional: Add formwork marks to the surface. Scratch the dry surface with a sharp-edged tool along a guide rail. Optional: apply Sto Clear Coat Sealer for desired gloss.

Notes

The color shade used here is SCS AC 16282.

Stolit Milano is not an abrasion or mar resistant finish nor is it available in dark colors. For added mar resistance top coat with two light coats of Sto Clear Coat Sealer, available in matte or gloss. For dark colors top coat Stolit Milano with StoColor® Acryl Plus in the desired color.

Contact your local distributor for Sto tools.



Impression: Concrete 30

Fine textured finish with a smooth concrete appearance.



Skill Level 4

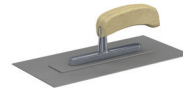


Surface Description

Description	• Stolit Milano is applied to Stolit 1.0 in one or several layers and smoothed. The entire surface is sanded smooth after drying. Then characteristic formwork marks can be added.
Product	• Stolit 1.0 with Stolit Milano
Supplementary Products	• Sto Clear Coat Sealer (optional)
Possible Color Shades	• StoColor System; LRV \geq 20 for StoTherm ci systems with EPS or XPS insulation The minimum permissible light reflectance value depends on the substrate, the system, and the product and can deviate for specific countries.



Stainless Steel Trowel



Plastic Float

Please note that the details, illustrations, general technical information, and drawings contained in this brochure are only general proposals and details which merely describe the basic functions schematically. They are not dimensionally accurate. Applicator/customer is independently responsible for determining the suitability and completeness for the product in question. Adjacent works are described only schematically. All specifications and information must be adjusted or agreed in the light of local conditions and do not constitute work, detail or installation plans. The technical specifications and product information in the Technical Data Sheets and in system descriptions/approvals must be observed.



Application Steps

Impression: Concrete 30

Fine textured finish with a smooth concrete appearance.



1 Using a stainless steel trowel, apply Stolit 1.0 and trowel off to aggregate size. Only apply finish to the area that will be textured immediately.



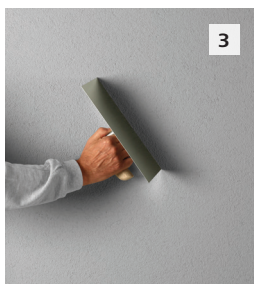
5 Apply a second thin layer of Stolit Milano in a similar manner as step 4 and smooth. Leave the surface to dry.



2 Float the freshly troweled finish in figure eight movements using a plastic float. Always remove any excess finish paste from the plastic trowel. Leave the surface to dry.



6 Once completely dry, sand the surface within the next days either using a power or manual sander with a dry abrasive paper of P80 - P120 grit until the desired surface texture has been achieved. Note: depending on desired smoothness, additional coats of Stolit Milano and sanding may be required. Before each additional Stolit Milano application, blow/brush all loose particles from surface.



3 Knock the tips off the dried finish using the edge of the stainless steel trowel. Blow/brush all loose particles from surface.



7 Wash the finished facade with clear water or carefully dust off dry.



4 Using the stainless steel trowel, apply a thin layer of Stolit Milano to the dry Stolit 1.0. Let the finish dry. Knock the tips off the dried finish using the edge of the stainless steel trowel or lightly sand with P80 - P100 grit sand paper. Blow/brush all loose particles from surface.



8 Optional: Add formwork marks to the finished surface. Scratch the dry finish with a sharp-edged tool along a guide rail. Optional: apply Sto Clear Coat Sealer for desired gloss.

Notes

The color shade used here is SCS AC 16282.

Stolit Milano is not an abrasion or mar resistant finish nor is it available in dark colors. For added mar resistance top coat with two light coats of Sto Clear Coat Sealer, available in matte or gloss. For dark colors top coat Stolit Milano with StoColor Acryl Plus in the desired color.

Notes and Tips

Basic Information:

Achieving good results requires a certain degree of skill and knowledge of the trade, plus preliminary training in the relevant techniques.

Hand-held samples and sample surface areas:

Smaller samples are not always suitable for providing an overall impression of an application technique on larger facade surfaces. For this reason, we highly recommend having the contractor prepare a mock up sample. If this work requires scaffolding, this should be taken into account when creating the sample. The finished sample area should be inspected and accepted by the site manager/building owner. The area provides a reference surface for the contracted service.

Planning the work procedure and how the work is divided up:

Before starting the work, determine who will carry out which tasks such as applying, smoothing or texturing. Carefully plan each coating process, taking into account the weather conditions, and prepare the relevant material.

Uniform Application:

When tradesmen create facade textures or structures, it is important to remember that each tradesman has his or her own signature style. For smaller facade surfaces, if possible same person should create the structure or texture, in order to prevent discrepancies. On large facade surfaces, an experienced team may combine individual application techniques to produce an end result that has a harmonious appearance.

Size of the area:

For large facades, we recommend dividing the surface to be created into smaller partial areas. This ensures that calculations and execution are reliable, and that good application results will be achieved.

Scaffolding:

The scaffolding must be appropriate for the trade processes being carried out and the techniques and tools used: take into account the spacing, the brackets, the projections, and the positioning and height of the scaffolding.

Weather protection:

If the weather is unfavorable during the application and drying processes, it is necessary to put in place appropriate protective measures (rain/solar protection, etc.).

Corner areas/connections:

Carefully plan connections and corner areas. It may be necessary to use a different application technique in these areas. Not every technique is suitable for use up into internal corners, for example.

Areas with fine textured finish:

Float-finishing, smoothing, or sanding smoothed textures requires more extensive substrate preparation than in the case of rough textures. Additional measures for levelling out the substrate may be required depending on its nature.

Color schemes:

Intense or dark colors will emphasize uneven areas of the substrate, textural differences in the finish, and any other effects caused during application. For this reason, a coarser finish texture (aggregate size >2.0) is recommended for facades with intense colors or dark tints. It is important to observe project-related aspects from a technical perspective such as substrate warming and system compatibility. The color shade must be balanced to suit the substrate, system and type of use.

Sto Americas

Sto Corp.

3800 Camp Creek Pkwy
Building 1400, Suite 120
Atlanta, GA 30331
USA

Phone 1-800-221-2397
www.stocorp.com

ATTENTION

Sto products are intended for use by qualified professional contractors, not consumers, as a component of a larger construction assembly as specified by a qualified design professional, general contractor or builder. They should be installed in accordance with those specifications and Sto's instructions. Sto Corp. disclaims all, and assumes no, liability for on-site inspections, for its products applied improperly, or by unqualified persons or entities, or as part of an improperly designed or constructed building, for the nonperformance of adjacent building components or assemblies, or for other construction activities beyond Sto's control. Improper use of Sto products or use as part of an improperly designed or constructed larger assembly or building may result in serious damage to this product, and to the structure of the building or its components. **STO CORP. DISCLAIMS ALL WARRANTIES EXPRESSED OR IMPLIED EXCEPT FOR EXPLICIT LIMITED WRITTEN WARRANTIES ISSUED TO AND ACCEPTED BY BUILDING OWNERS IN ACCORDANCE WITH STO'S WARRANTY PROGRAMS WHICH ARE SUBJECT TO CHANGE FROM TIME TO TIME.** For the fullest, most current information on proper application, clean-up, mixing and other specifications and warranties, cautions and disclaimers, please refer to the Sto Corp. website, www.stocorp.com.